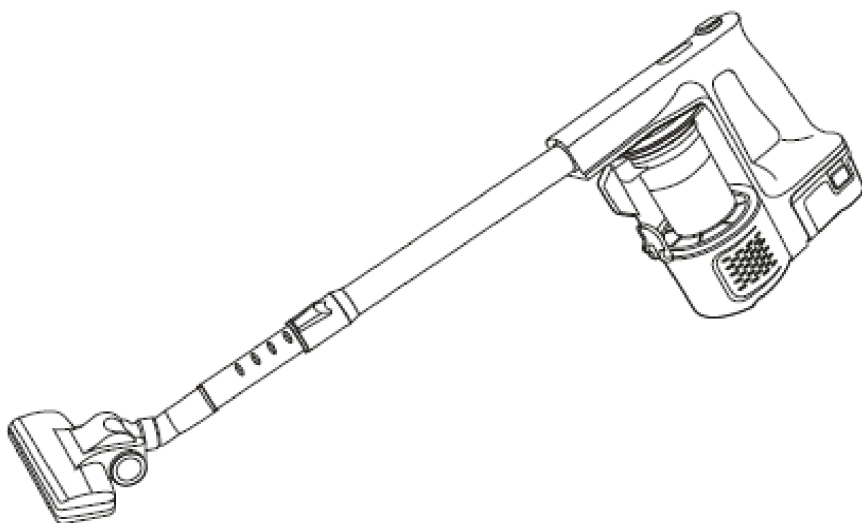




VPLD-62526022016



Cordless Hand Held

Vacuum Cleaner

Instruction Manual

Model Ref: VPLD-625

Thank you for choosing the ValetPro Cordless Hand Held Vacuum Cleaner. All products brought to you by Giani are manufactured to the highest standards of performance and safety.

Before use, please read this manual. It gives important instructions about safety, use and maintenance of your appliance.

Remove all packaging material. You may wish to keep the packaging for future use or storage for your appliance. Alternatively, dispose of accordingly.

Index

Important Safety Information.....	02
Product Overview.....	04
Technical Information.....	05
Before First Use.....	05
Attaching the Battery to the Main Unit.....	05
Charging Your Vacuum Cleaner.....	05
Charging LED Light Indicators.....	06
Fitting the Extension Tube and Accessories.....	06
Operation.....	07
Emptying the Dust Container.....	07
Cleaning the Filters.....	08
Notes for Cleaning.....	09
Troubleshooting.....	09
User Maintenance.....	09
After Sales Support.....	10
Product Guarantee.....	10

Important Safety Information

Please read all of the instructions before using this vacuum cleaner and keep safe for future reference.

When using electrical appliances, basic precautions should always be followed, including the following:

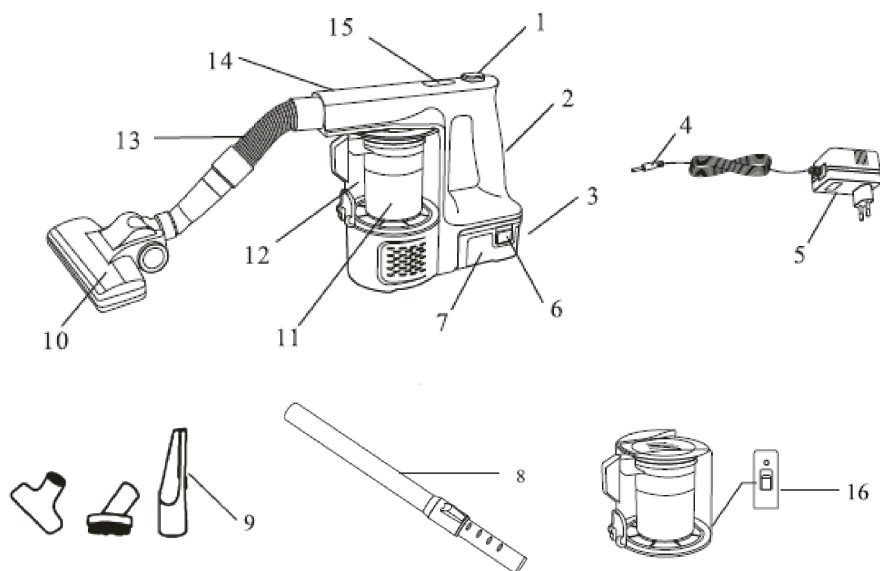
- This vacuum cleaner is for domestic use only. It should not be used for commercial purposes.
- Do not use outdoors or on wet surfaces.
- Only use this appliance for its intended domestic use. Giani Ltd will not accept any liability if the appliance is subject to improper use, or failure to comply with these instructions.
- Do not handle the charger or vacuum cleaner with wet hands.
- This appliance can be used by children aged from 8 years and above and persons with reduced physical, sensory or mental capabilities, or lack of experience and knowledge, if they have been given supervision or instruction concerning the use of the appliance in a safe way and understand the hazards involved.
- Children must not play with this appliance.
- Cleaning and user maintenance shall not be made by children unless they are older than 8 and supervised.
- Keep the appliance and its cord out of reach of children less than 8 years.
- This product is not a toy.
- Do not use the vacuum cleaner if any parts appear to be faulty, missing or damaged.
- Do not use the vacuum cleaner if it has been dropped or damaged in any way.
- Do not charge the appliance with a broken adaptor, cable or plug. It must be replaced or repaired by a qualified electrician in order to avoid a hazard.
- Ensure all parts including the dust tank are securely attached before using or moving the vacuum cleaner.
- When carrying out any cleaning of the appliance, performing user maintenance or changing accessories, make sure the appliance is switched off and the charger unplugged from the mains supply.

- Do not unplug the charger by pulling on the power cable. To unplug, hold by the charger casing, not the cord.
- Unplug the charger from socket when not in use for extended periods. Make sure the charger cable is located so that it will not be stepped on, tripped over, or otherwise subjected to damage.
- Do not stretch the charger cable or place the cable under strain. Keep cable away from heated surfaces.
- Use of an extension cord with the appliance is not recommended.
- Keep hair, loose clothing, fingers and all parts of the body away from openings of the vacuum cleaner.
- Do not use with any of the openings blocked; keep free of dust, lint, hair and anything that may reduce airflow.
- Take extra care when vacuuming on the stairs.
- Do not use to pick up liquids.
- Do not use to pick up flammable or combustible materials.
- Do not use to pick up hot or burning objects such as cigarettes, matches or hot ashes.
- Do not use to pick up building materials such as plaster, cement, brick dust etc. - this will damage the motor.
- Do not use the vacuum cleaner to pick up large, hard or sharp objects such as glass, nails, screws, coins etc. - This will damage the vacuum cleaner.
- Only use the attachments/accessories supplied with the product or recommended by Giani.
- Do not use without the dust tank and filters in place.
- Ensure that the dust tank is emptied and the filters cleaned regularly to maintain the performance of the vacuum cleaner.
- Do not store in direct sunlight or high humidity conditions.



This appliance has a safety thermal cut out. This will operate if the battery becomes hot when charging or over charging. If this happens, remove the appliance from the charger and allow the battery to cool before operating the appliance.

Product Overview



- 1 – On / Off Power Button
- 2 – Handle
- 3 – Charging Socket Connection
- 4 – DC End of Charger (to be inserted in charger socket connection)
- 5 – Charger Plug
- 6 – Battery Case Release Buttons
- 7 – Battery Case
- 8 – Aluminium Telescopic Extension Tube
- 9 – Accessory Tools (Crevice Tool, 2 x Brushes)
- 10 – Floor Brush
- 11 – Filter
- 12 – Dust Tank
- 13 – Flexible Hose
- 14 – Inlet
- 15 – LED Operational Light
- 16 – Dust Tank Release Button

Technical Information

Voltage	22.2vDC
Rechargeable Battery Capacity	2000 mAh
Wattage	140W
Motor Current	6.5A
Class	III
Dust Tank Capacity	0.5L

Before First Use

Before using your vacuum cleaner for the first time, ensure that you have received all parts and wipe all parts with a soft damp cloth.

Always transport the vacuum in its original packaging so that it does not become damaged.

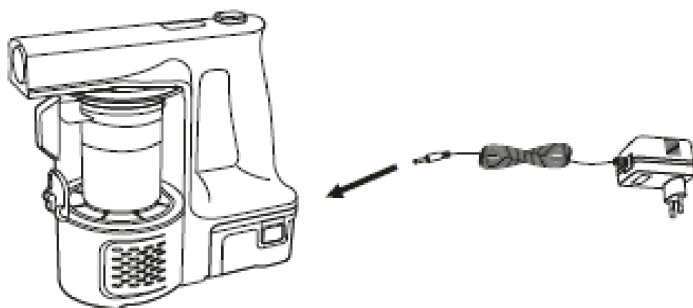
Attaching the Battery to the Main Unit

1. Remove the cover plate from the pin header of the main body.
2. Insert the square hole of the battery box into the pin header of the body, push the battery box until it locks into place.

Charging Your Vacuum Cleaner

Before use, check if the battery capacity is full. If not, charge as follows:

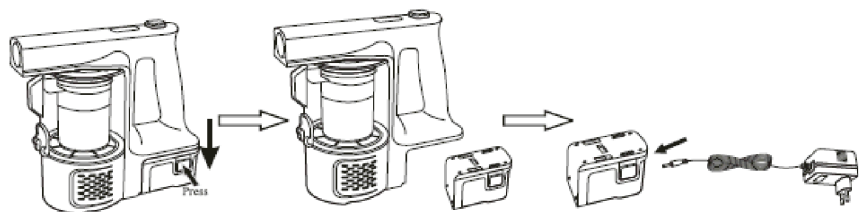
1. Insert the DC end of the charger into the charging socket connection at the rear of the appliance, plug the other end of the charger into the main plug socket and switch on the mains supply.
2. A green LED light will flash to show the battery is charging.
3. The battery will take 2-2.5 hours to fully charge.



Charging LED Light Indicators

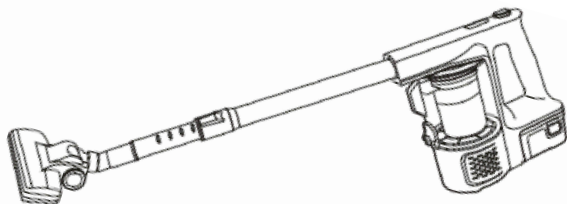
1. RED LIGHT: No Battery Charge Left – The unit needs to be fully charged
2. ONE GREEN LIGHT: Limited Battery Charge – The unit needs to be charged
3. TWO GREEN LIGHTS: Half Battery Charge.
4. THREE GREEN LIGHTS: The battery is fully charged.

NOTE: the battery case can be released from the vacuum cleaner and can be charged separately. The battery will charge in the same time but there will be no LED Light indicators to show the charging status.



Fitting the Extension Tube and Accessories

1. Insert the corresponding end of the extension tube into the inlet of the appliance; insert the other end into the floor brush head or other tool accessory.



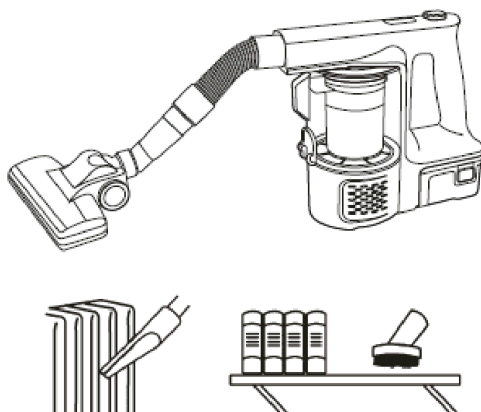
The floor brush is perfect for vacuuming hard floors and carpets.

2. Attach the accessories in the same manner. You can attach to the end of the extension tube or alternatively they can be attached to the main body inlet.



The crevice tool is ideal for cleaning the side of sofas and difficult to reach areas.

3. Using the flexible hose – Attach to the inlet of the main unit. Connect the accessory required to the other end.



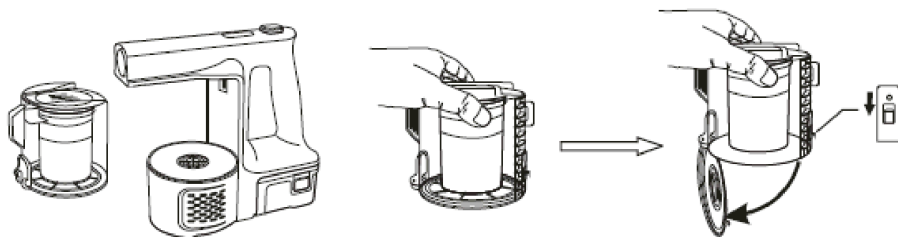
The hose, nozzle and brushes are ideal for cleaning difficult to reach angles and tight spaces.

Operation

Press the On/Off button to start cleaning.

Emptying the Dust Tank

1. Turn the unit off.
2. Remove the dust tank from the main unit.
3. Hold the dust tank over a dustbin, press the release button to open the bottom and release the dirt.



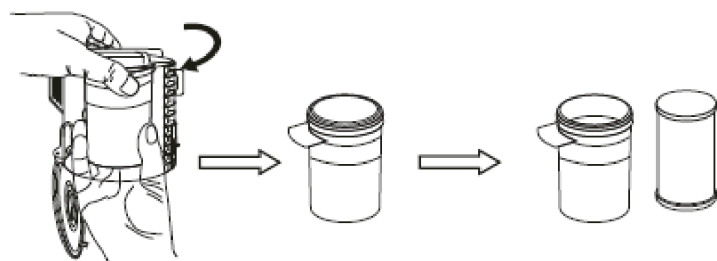
Cleaning the Filters

To maintain the performance of the vacuum cleaner, ensure the filters are regularly cleaned.

Never use the vacuum cleaner without the filters in place.

Never let the dirt level exceed the MAX level indicator.

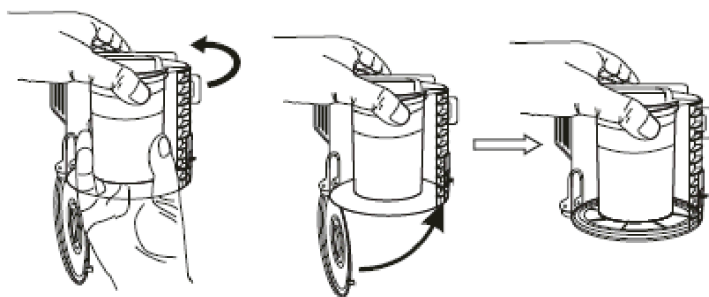
1. Turn off the vacuum cleaner and remove the battery.
2. Remove the dust tank and empty as described in 'Emptying the Dust Tank'
3. Hold the net filter, rotate clockwise and remove the filter.
4. Remove the inside filter from the net filter.



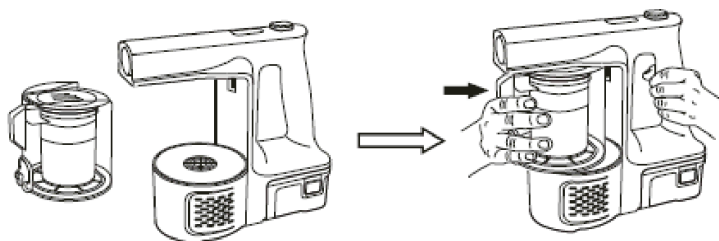
5. Gently tap the filters against a dustbin to loosen dust and debris.
6. Rinse the filters under a running tap or clean with a soft sponge.
7. To avoid damage to your vacuum, ensure the filters are completely dry before putting them back into the body of the vacuum. Leave filters to dry for 24 hours after wet cleaning.

NOTE: Do not use hard brushes to clean the filters, this will damage them. Regular cleaning of the filters is recommended.

8. After the filters have fully dried, refit the net and inner filter together. Lock by rotating the net filter counter clockwise.



9. Close the bottom of the dust tank, align the dust tank into position and lock into the body of the vacuum cleaner.



Notes for Cleaning

- Filters **MUST** be cleaned regularly for best performance and to prevent your vacuum from over-heating and damage being caused to the vacuum cleaner.
- Using wet or damp filters will cause serious damage to your vacuum cleaner, **ALWAYS** make sure the filters are thoroughly dry before putting back into the vacuum cleaner.
- Do not use a hair dryer to dry the filters.

Troubleshooting

Always turn off the appliance when performing user maintenance.

Problem	Solution
Vacuum cleaner not working	<ol style="list-style-type: none">1. Check LED indicator, if the battery is running low, recharge.2. Check if the inlet is blocked.3. Check if the product is turned on at the switch.
Low suction	<ol style="list-style-type: none">1. Check if the brush/hose is blocked. If so, clear the blockage before proceeding.2. Check the filtration. If blocked, clear.
Abnormal noise in motor	<ol style="list-style-type: none">1. Stop using the vacuum immediately.2. Check for blockages.3. Clear the blockages before proceeding.
Unit will not charge	<ol style="list-style-type: none">1. Check if the DC end is inserted correctly into the vacuum.2. Check the battery is fitted properly to the main unit.3. Check the charger is connected to a switched on mains supply.

User Maintenance

- The charger plug **MUST** be removed from the power socket after charging.
- Beware of sharp objects when clearing blockages.
- To maximise the performance of your vacuum cleaner, clean the filters regularly.
- Store the vacuum cleaner and battery in a cool dry place.

After Sales Support

If the power cord is damaged, it **MUST** be replaced by a qualified electrician.

If you need help using your Vacuum Cleaner, please contact Giani Ltd:-

- Telephone: 0161 480 6204
- Email: info@gianiuk.co.uk
- Website: www.gianiuk.co.uk
(replacement instruction manuals are available to download).

Product Guarantee (UK Only)

If your appliance ceases to function within 1 year from the date of purchase, the retailer will replace it free of charge, provided:

- You have not misused, neglected or damaged it
- It has not been modified (except by Giani Ltd)
- It was not purchased second hand
- It has not been used commercially
- You have not fitted a plug incorrectly
- You can supply proof of purchase, indicating the price you paid and where and when the appliance was purchased.

This guarantee does not affect your statutory rights.



IMPORTANT INFORMATION FOR CORRECT DISPOSAL OF THE APPLIANCE IN ACCORDANCE WITH EC DIRECTIVE 2002/96/EC

At the end of its working life, the appliance must **NOT** be disposed of as urban waste.

It must be taken to a special local authority differentiated waste collection centre or to a dealer providing this service.

Disposing of a household appliance separately avoids possible negative consequences for the environment and health deriving from inappropriate disposal and enables the constituent materials to be recovered to obtain significant savings in energy and resources. As a reminder of the need to dispose of household appliances separately, the product is marked with a crossed-out wheeled dustbin.



Giani Limited - SK2 6RH

info@gianiuk.co.uk